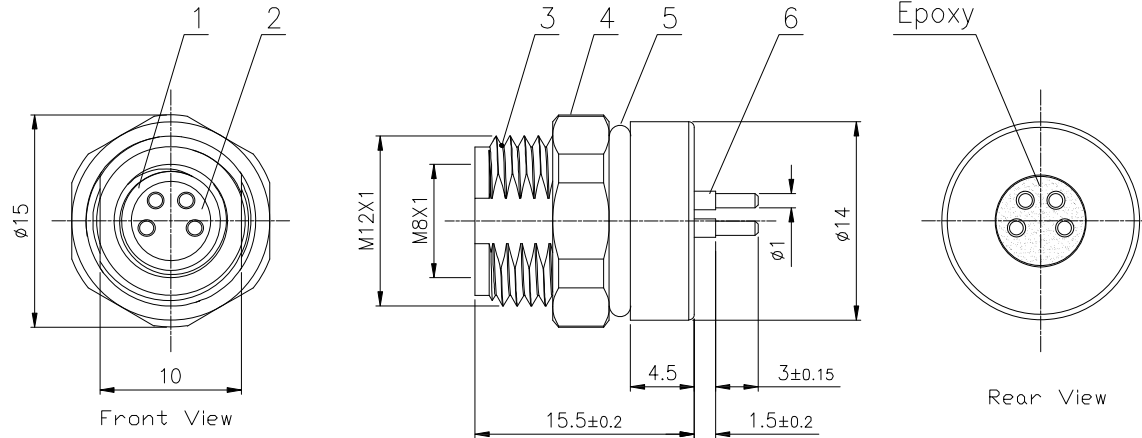


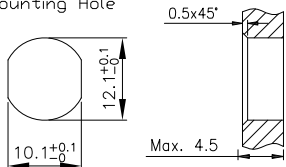


| | | | | | |
|-------------|-------------|--------------|------------|-----------|--|
| Product NO. | | RHT-634-1346 | | | |
| ISSUE | DESCRIPTION | DWN | DATE | APPROVEN | |
| RL.0 | First issue | Galvin | 2020/01/09 | JIM. KING | |

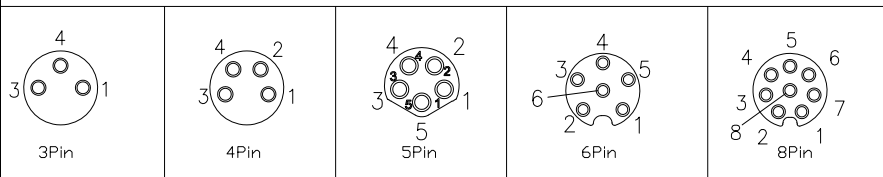


- Specifications:**
- IP rating: IP67
 - Ambient temperature: -25°C~+85°C
 - Mating endurance: >100cycles
 - Rated voltage:
 - 3,4pin 50V AC/60V DC
 - 5,6,8pin 30V AC/DC
 - Rated current:
 - 3,4,5pin 3A
 - 6,8pin 1.5A
 - Contact resistance: $\leq 5m\Omega$
 - Insulation resistance: $\geq 100 M\Omega$

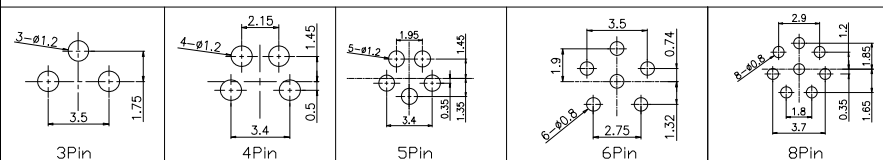
Recommended Mounting Hole



Pin Assignments Front View



P.C.B



| | | | | |
|----|-------------|----------|--------|-----|
| 6 | Contacts | Brass | Gold | 3-8 |
| 5 | O-Ring | Rubber | | 1 |
| 4 | Nut M12*1 | Brass | Nickel | 1 |
| 3 | Body | Brass | Nickel | 1 |
| 2 | Insulator | PA66 | Black | 1 |
| 1 | O-Ring | Rubber | | 1 |
| NO | Description | Material | Finish | Qty |

| | | | | | |
|---|-----------|-----------------------|-------|---|-----------|
| -TOLERANCES- UNLESS OTHERWISE SPECIFIED | | RENHOTEC GROUP | | | |
| UNLESS OTHERWISE SPECIFIED TOLERANCES FOR MILLIMETERS ARE: 0.5 - 8mm ± 0.20mm 8 - 30mm ± 0.25mm 30 - 120mm ± 0.30mm | | | | PART DESCRIPTION: M8 Female Connector, Front Mount, PCB type | |
| Appr: | JIM. KING | P/N: RHT-634-1346 | | | |
| Check: | | Date | Scale | Unit | Type Page |
| Draw: | Galvin | 2020.01.09 | Free | MM | Z 1/1 |