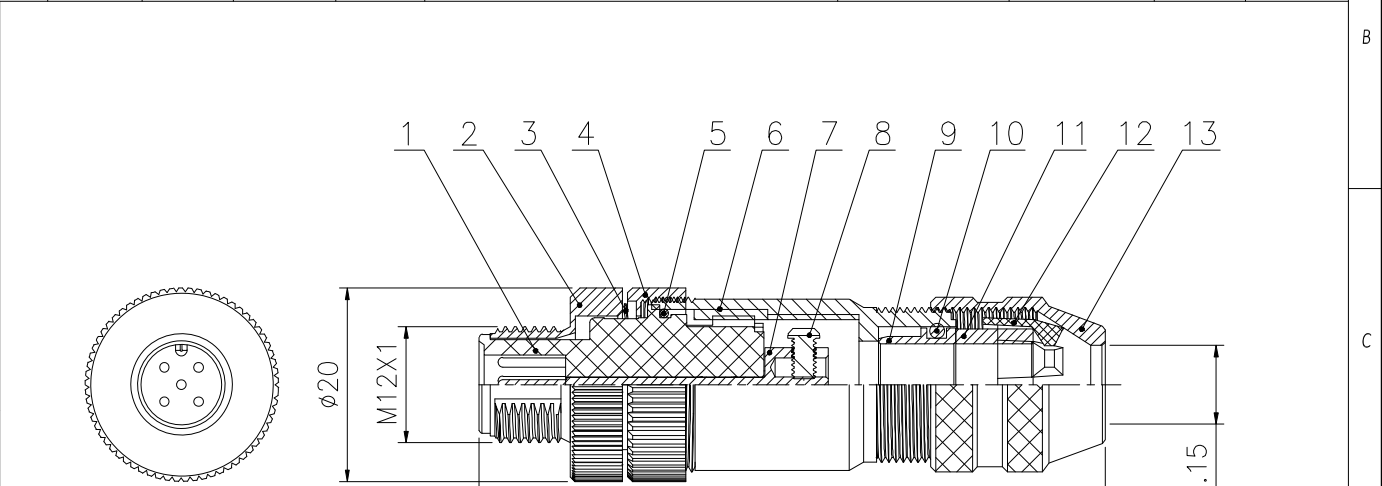
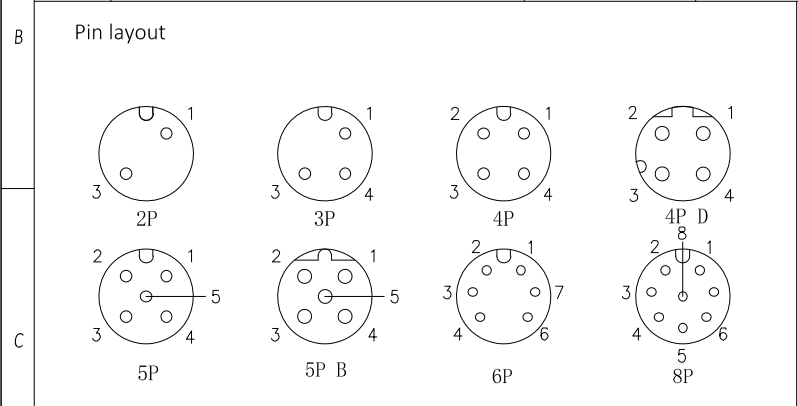


1		2		3		4		5		6	
No.	Specification	Material	Treat	Unit	Q'ty	No.	Specification	Material	Treat	Unit	Q'ty
1	Insert	PA	/	pc	1	8	Screw	Brass	Nickel	pc	2~8
2	Screw	Brass	Nickel	pc	1	9	Shielded tube	Brass	Nickel	pc	1
3	Gasket	SS	/	pc	1	10	O-ring	Rubber	/	pc	1
4	Nut	Brass	Nickel	pc	1	11	Tube	SIL	/	pc	1
5	O-ring	Rubber	/	pc	1	12	Pinch ring	PA	/	pc	1
6	Body	Zinc	Nickel	pc	1	13	Nut	Brass	Nickel	pc	1
7	Contact	Brass	Gold	pc	2~8						



Technical specifications

Connector mode: Screw
Wiring mode: Screw
Pollution: 3
Degree of protection: IP67
Mating cycles: ≥ 500

PIN	2	3	4	4D	5	5B	6	8
Rated voltage/ Current	4A/250V	4A/250V	4A/250V	4A/250V	4A/60V	4A/60V	2A/30V	2A/30V
Rated pulse voltage	2500V	2500V	2500V	2500V	1500V	1500V	800V	800V
Insulation resistance (M Ω)	≥ 100	≥ 100	≥ 100	≥ 100	≥ 100	≥ 100	≥ 100	≥ 100
Contact resistance (m Ω)	≤ 5	≤ 5	≤ 5	≤ 5	≤ 5	≤ 5	≤ 5	≤ 5

-TOLERANCES- UNLESS OTHERWISE SPECIFIED	RENHOTEC GROUP					
	PART DESCRIPTION: M12 Male connector, ASS'Y Type					
UNLESS OTHERWISE SPECIFIED TOLERANCES FOR MILLIMETERS ARE: 0.5 - 8mm ± 0.20 mm 8 - 30mm ± 0.25 mm 30 - 120mm ± 0.30 mm	Appr: JIM.KING	P/N: RHT-634-3193				
	Check:	Date	Scale	Unit	Type	Page
	Draw: DING	2022.09.17	Free	MM	Z	1/1