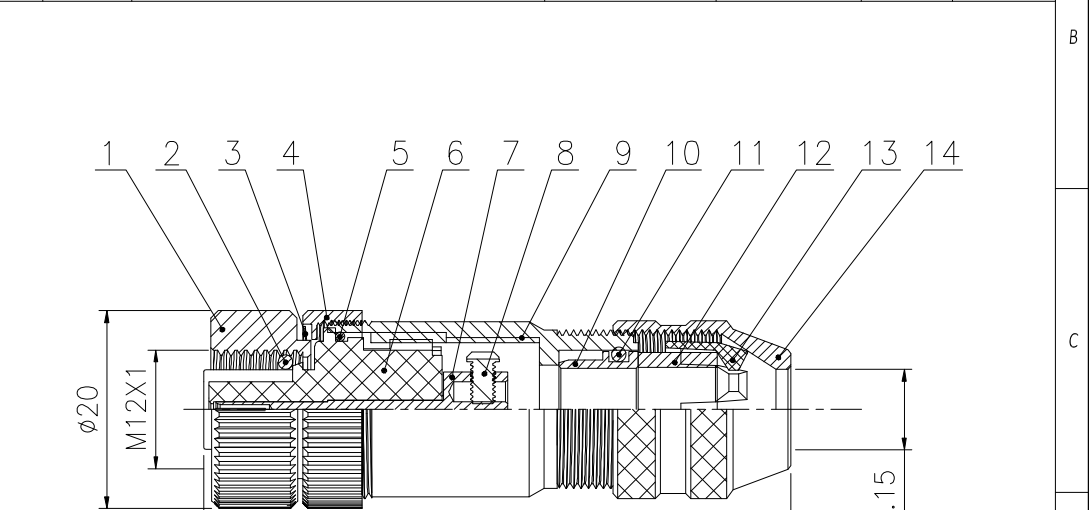
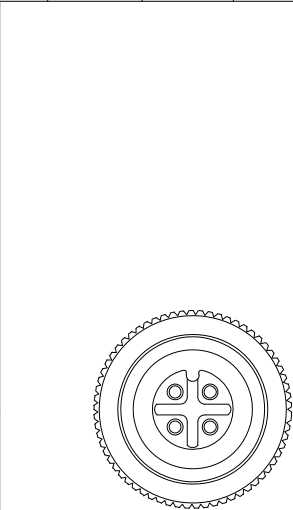
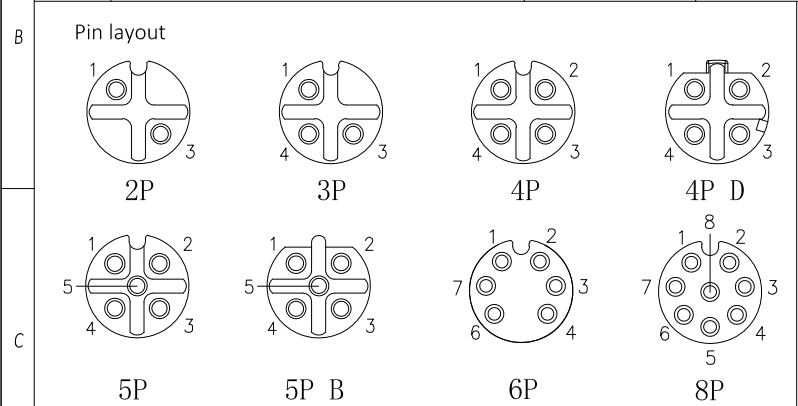


1		2		3		4		5		6	
No.	Specification	Material	Ireat	Unit	Q'ty	No.	Specification	Material	Ireat	Unit	Q'ty
1	Nut	Brass	Nickel	pc	1	8	Screw	Brass	Nickel	pc	2~8
2	O-ring	Rubber	/	pc	1	9	Body	Zinc	Nickel	pc	1
3	Gasket	SS	/	pc	1	10	Shielded tube	Brass	Nickel	pc	1
4	Screw	Brass	Nickel	pc	1	11	O-ring	Rubber	/	pc	1
5	O-ring	Rubber	/	pc	1	12	Tube	SIL	/	pc	1
6	Insert	PA	/	pc	1	13	Pinch ring	PA	/	pc	1
7	Contact	Brass	Gold	pc	2~8	14	Nut	Brass	Nickel	pc	1



Technical specifications

Connector mode: Screw
Wiring mode: Screw
Pollution: 3
Degree of protection: IP67
Mating cycles: ≥500

PIN	2	3	4	4D	5	5B	6	8
Rated voltage/ Current	4A/250V	4A/250V	4A/250V	4A/250V	4A/60V	4A/60V	2A/30V	2A/30V
Rated pulse voltage	2500V	2500V	2500V	2500V	1500V	1500V	800V	800V
Insulation resistance (MΩ)	≥100	≥100	≥100	≥100	≥100	≥100	≥100	≥100
Contact resistance (mΩ)	≤5	≤5	≤5	≤5	≤5	≤5	≤5	≤5

-TOLERANCES- UNLESS OTHERWISE SPECIFIED	RENHOTEC GROUP					
	PART DESCRIPTION: M12 Female connector, ASS'Y Type					
UNLESS OTHERWISE SPECIFIED TOLERANCES FOR MILLIMETERS ARE: 0.5 - 8mm ± 0.20mm 8 - 30mm ± 0.25mm 30 - 120mm ± 0.30mm	Appr: JIM.KING	P/N: RHT-634-3194				
	Check:	Date	Scale	Unit	Type	Page
	Draw: DING	2022.09.17	Free	MM	Z	1/1