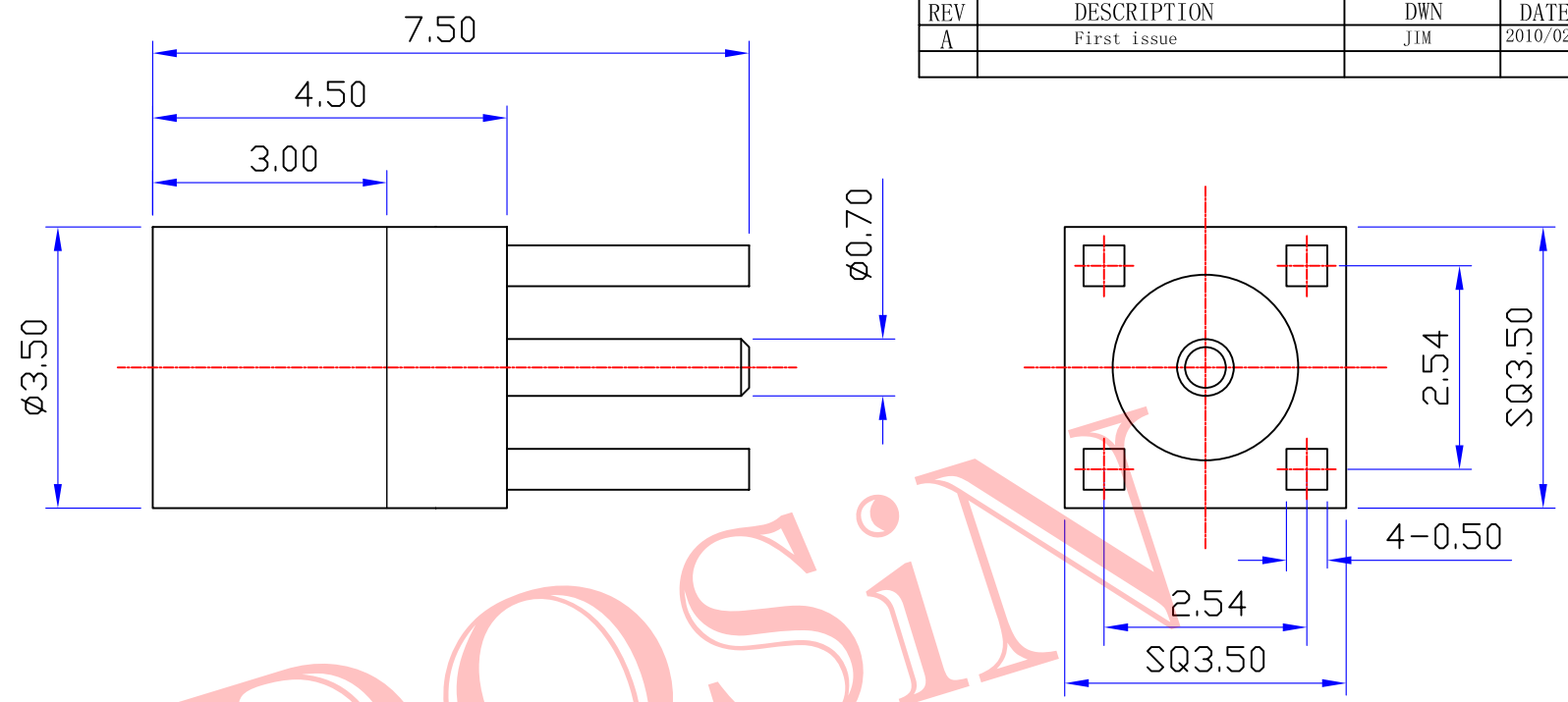




Product NO.		DOSIN-809-0017		
REV	DESCRIPTION	DWN	DATE	APPROVEN
A	First issue	JIM	2010/02/03	John kine



- NOTE :
- MATERIAL
 - INSULATOR: TEFLON, WHITE.
 - BODY: BRASS, G/F PLATED.
 - PIN: BRASS, G/F PALTED.
 - Electrical Characteristics
 - Impedance: 50 Ohm
 - Working Frequency: DC - 6 GHz
 - S.W.R.: ≤ 1.2
 - Working Voltage: 250V max
 - Insulation Resistance: 1000 MOhm
 - Contact Resistance: Center Contact: 5 mOhm
Outer Contact: 2.5 mOhm
 - Environmental
 - Working Temperature Range: - 55 °C~ +125°C

DOSIN

NOTE:		Tolerance	0-6 ± 0.2 6-30 ± 0.3 30-120 ± 0.5 Angular $\pm 2^\circ$
DRAWN	2012/04/10	View	
Zelin. Zhang	10	UNIT	MM
CHECKED		SCALE	1:1
APPROVALS	12/04.2012	DateTime	2012/04/10
John Kine		CAD FILE	D/company drawings/BD

Dosin Industrial(H.K)Co.Ltd 东莞市德索五金电子制品有限公司 Dosin Hardware Electronics Co.,Ltd		E-mail: dosin2005@163.com dosin2005@dosin-china.com Web: http://www.china-guan.com TEL: (0086)769-81153906 FAX: (0086)769-81875836	
Name: MMCX CONNECTOR			
SIZE A	Product NO.	DOSIN-809-0017	REV B
DateTime	SHEET: 1 OF 1		
2012/04/10			

3	INSULATOR	PTFE	WHITE	1
2	PIN	BRASS	GOLD	1
1	BODY	BRASS	GOLD	1
NO	DESCRIPTION	MATERIAL	FINISH	QTY